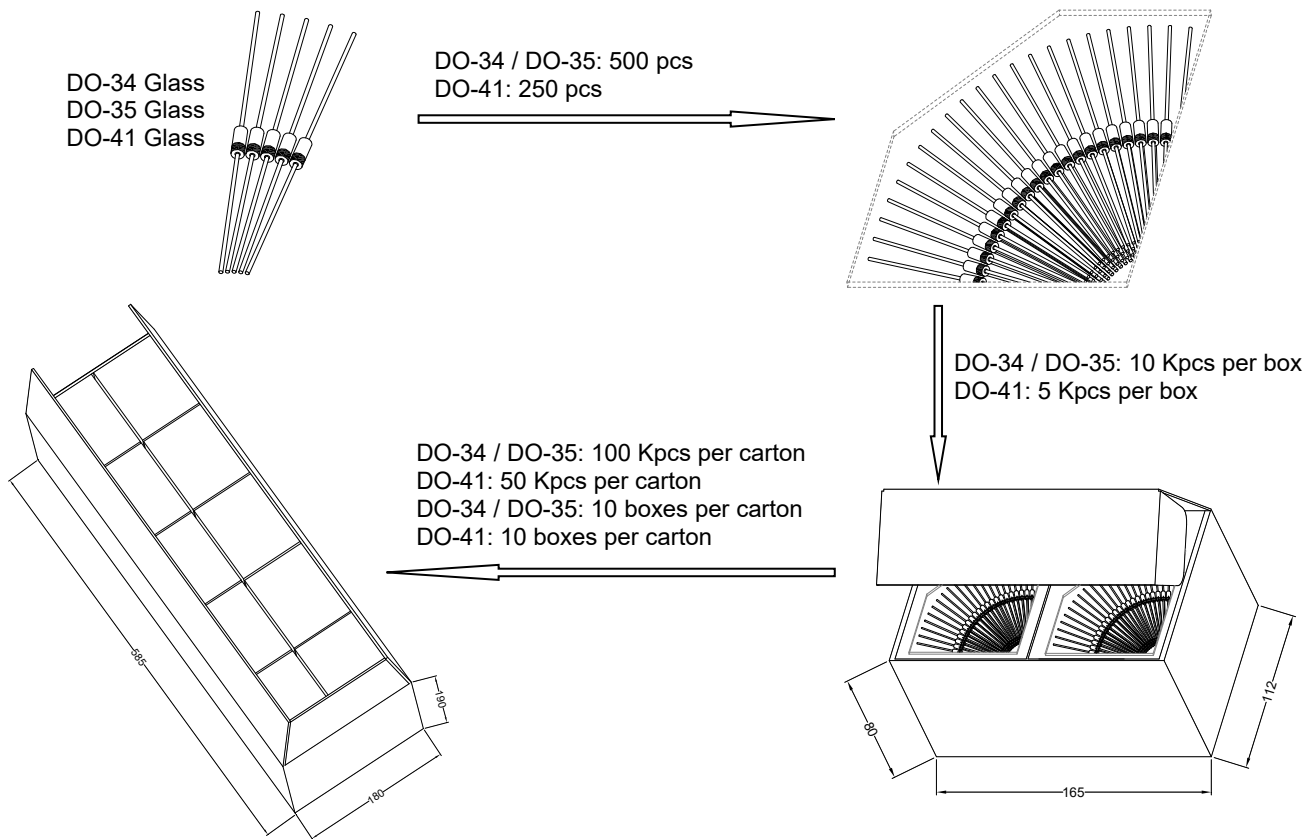


Packaging Specifications of Bulk Pack for Leaded Type Diodes

1. The method of packaging and dimension are shown as below figure. (Dimension in mm)



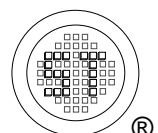
2. Label

2.1 The information of inner box label must be listed: (Description of a sample label)

2.1.1	TYPE BZX55C5V1	means (Product) TYPE (Part No.)
2.1.2	QTY 10,000 PCS	means (Product) Quantity (QTY)
2.1.3	D/C SL0B3N0917S01	means Dice Lot No. / Code (D/C)
2.1.4	P/C DBEB0822A	means Production Code (P/C)
2.1.5	RMK 50121	means Manufacturing Date (RMK)

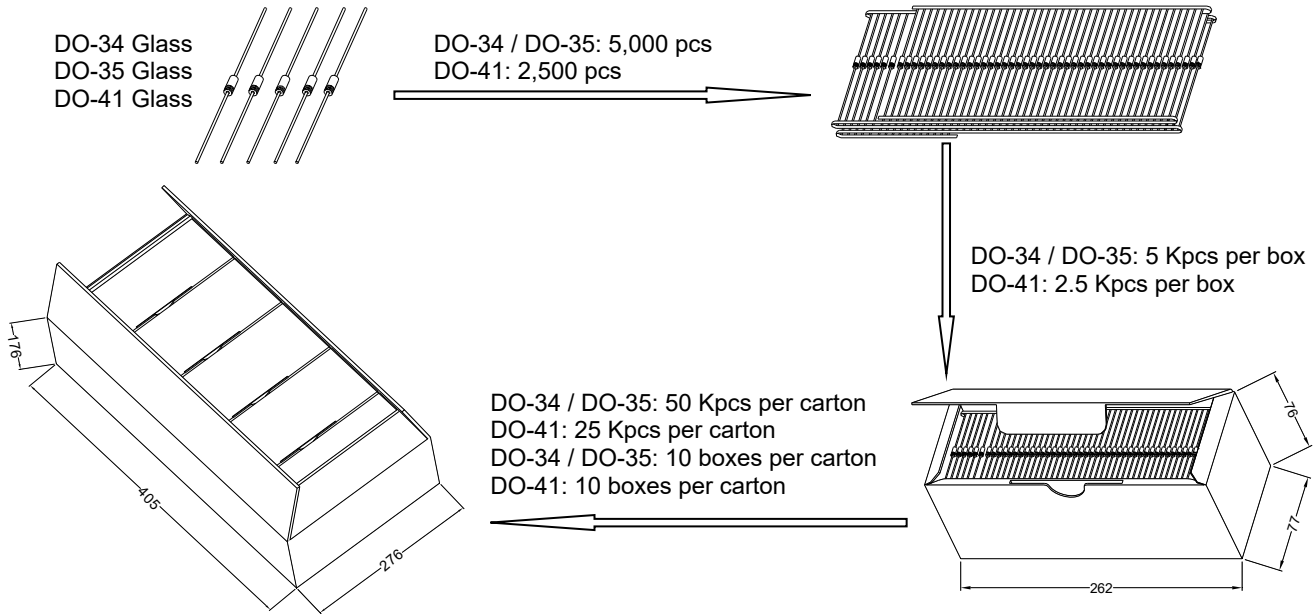
2.2 The information of carton label must be listed:

- 2.2.1 TYPE
- 2.2.2 QTY

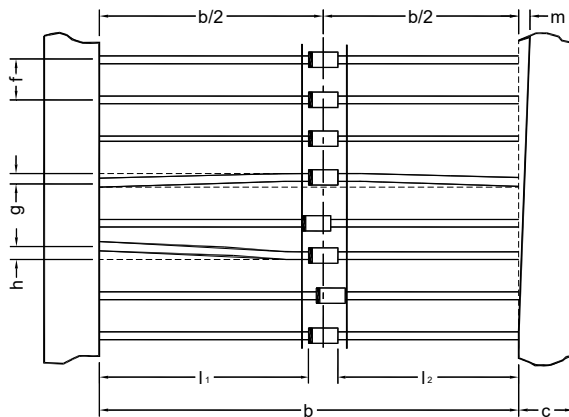


Packaging Specifications of 52 mm Ammo Pack for Leaded Type Diodes

1. The method of packaging and dimension are shown as below figure. (Dimension in mm)



2. Dimension of taping.





Units in mm

b	52.25 ±0.25
c	6.25 ±0.25
f	5 ±0.3
g	1 max.
h	1 max.
l ₁ -l ₂	1 max.
m	0.8 max.

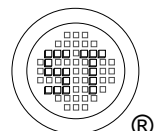
3. Label

3.1 The information of inner box label must be listed: (Description of a sample)

- 3.1.1 TYPE **BZX55C5V1** means (Product) TYPE (Part No.)
- 3.1.2 QTY 5,000 PCS  means (Product) Quantity (QTY)
- 3.1.3 D/C SLOB3N0917S01 means Dice Lot No. / Code (D/C)
- 3.1.4 P/C DBEB0822A means Production Code (P/C)
- 3.1.5  RMK 50121 means Manufacturing Date (RMK)

3.2 The information of carton label must be listed:

- 3.2.1 TYPE
- 3.2.2 QTY



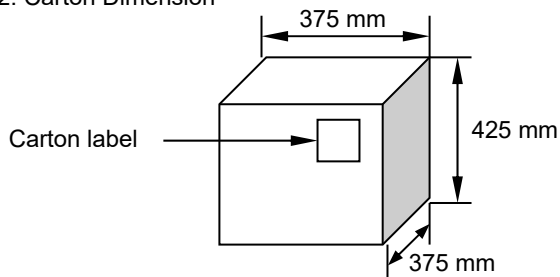
Packaging Specifications of 52 mm Reel Pack for Leaded Type Diodes

1. Dimension and quantity of reel and taping.

Units in mm

Product outline	A	B	C	D	Quantity	b	c	f	g	h	l1-l2	m
DO-34 / DO-35	355.8	30.18	88.9	70	10 Kpcs / reel	52.25 ±0.25	6.25 ±0.25	5 ±0.30	1 max.	1 max.	1 max.	0.8 max.
DO-7					5 Kpcs / reel							
DO-41 (Glass)					5 Kpcs / reel							
DO-41 (Plastic)					5 Kpcs / reel							
DO-15					5 Kpcs / reel							
DO-201AD	-	-	-	-	1 Kpcs / reel							
R-6					500 pcs / reel							

2. Carton Dimension



- 2.1 1 reel / layer
- 2.2 5 reels / carton

3. Packaging Quantity

Product outline	DO-34 / DO-35	DO-41 (Glass)	DO-7	DO-41 (Plastic)	DO-15	DO-201AD	R-6
Quantity / Carton	50 Kpcs	25 Kpcs	25 Kpcs	25 Kpcs	25 Kpcs	5 Kpcs	2.5 Kpcs

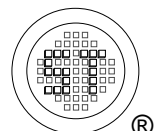
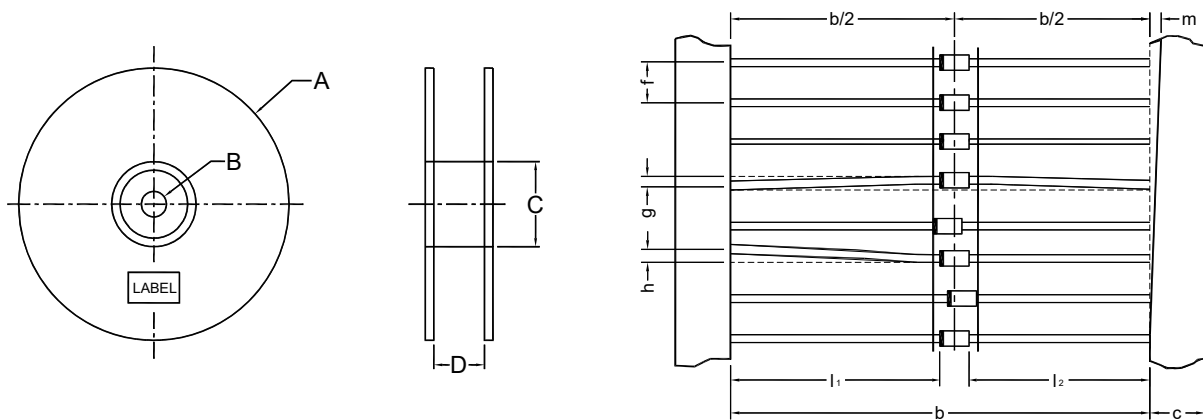
4. Label

4.1 The information of reel label must be listed:

- 4.1.1 TYPE
- 4.1.2 QTY
- 4.1.3 CODE
- 4.1.4 RMK

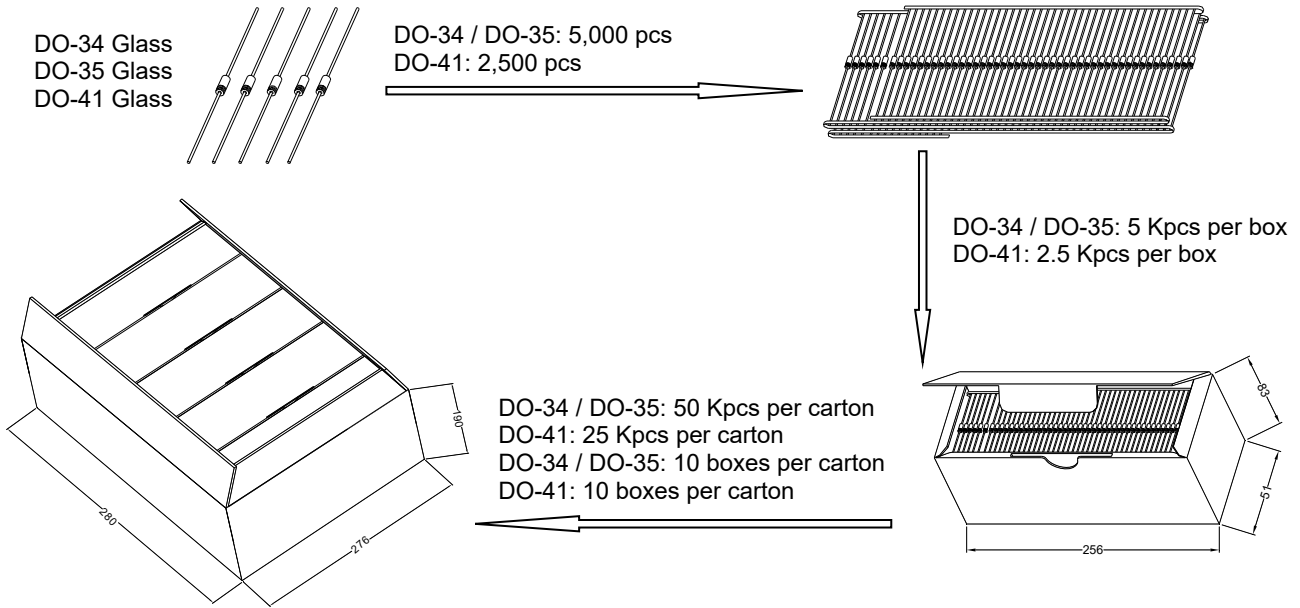
4.2 The information of carton label must be listed:

- 4.2.1 TYPE
- 4.2.2 QTY

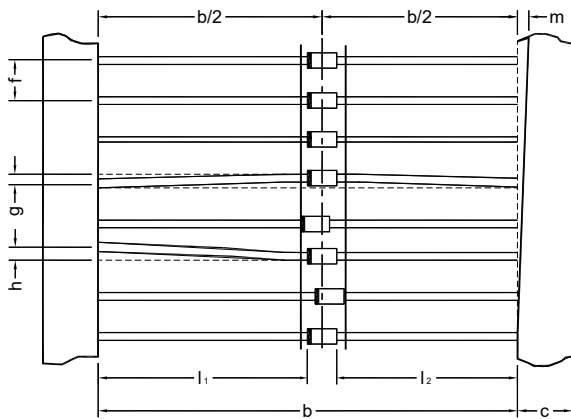


Packaging Specifications of 26 mm Ammo Pack for Leaded Type Diodes

1. The method of packaging and dimension are shown as below figure. (Dimension in mm)



2. Dimension of taping.




Units in mm

b	26.25 ± 0.25
c	6.25 ± 0.25
f	5 ± 0.3
g	1 max.
h	1 max.
l ₁ -l ₂	1 max.
m	0.8 max.

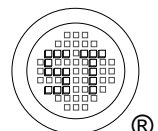
3. Label

3.1 The information of inner box label must be listed: (Description of a sample)

- 3.1.1 TYPE **BZX55C5V1** means (Product) TYPE (Part No.)
- 3.1.2 QTY **5,000 PCS**  means (Product) Quantity (QTY)
- 3.1.3 **D/C SLOB3N0917S01** means Dice Lot No. / Code (D/C)
- 3.1.4 **P/C DBEB0822A** means Production Code (P/C)
- 3.1.5 **RMK 50121** means Manufacturing Date (RMK)

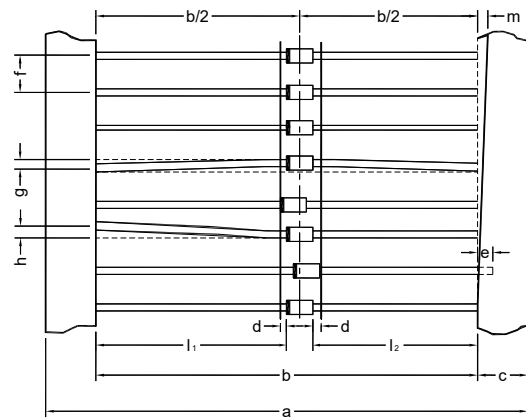
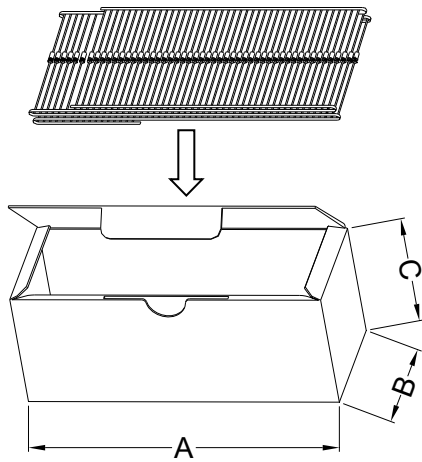
3.2 The information of carton label must be listed:

- 3.2.1 TYPE
- 3.2.2 QTY



Packaging Specifications of 26 mm Ammo Pack for Leded Type Diodes

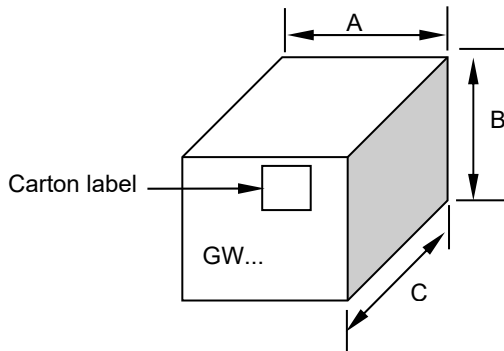
1. The method of inner box packaging is shown in figure 1.
2. Dimension and quantity of inner box and taping.



Units (mm)

Product Outline	A	B	C	Quantity	b	c	f	g	h	$ l_1-l_2 $	m
DO-41 (Plastic)	255	45	95	3 Kpcs / Box	26 ± 0.5	6 ± 0.4	5 ± 0.5	1.2 max.	$90^\circ \pm 5^\circ$	1 max.	0.8 max.

3. Carton Dimension



Units (mm)

Product Outline	A	B	C
DO-41 (Plastic)	270	300	420

4. Quantity of Carton Pack.

DO-41(Plastic): total: 63 Kpcs.

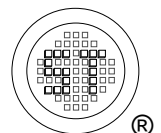
5. Label

5.1 The information of inner box label must be listed:

- 5.1.1 TYPE
- 5.1.2 QTY
- 5.1.3 CODE
- 5.1.4 RMK

5.2 The information of carton label must be listed:

- 5.2.1 TYPE
- 5.2.2 QTY



Packaging Specifications of 52 mm Ammo Pack for Leaded Type Diodes

1. The method of inner box packaging is shown in figure 1.
2. Dimension and quantity of inner box and taping.

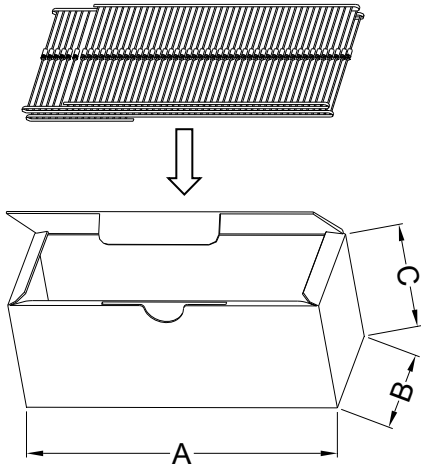
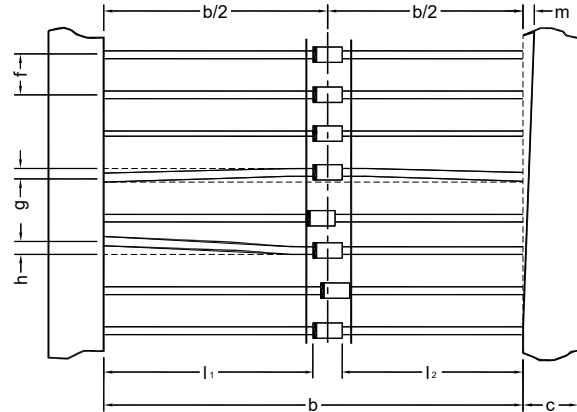


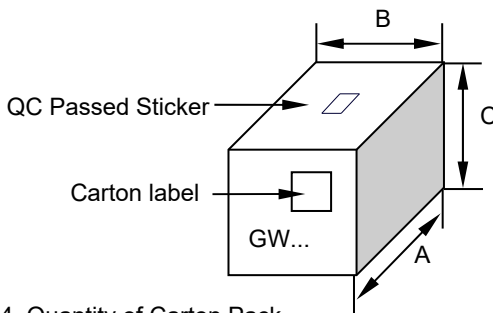
figure 1.



Units in mm

Product Outline	A	B	C	Quantity	b	c	f	g	h	$ l_1-l_2 $	m
DO-7	262	77	71	1.5 Kpcs / Box	52.25 ± 0.25	6.25 ± 0.25	5.0 ± 0.3	1 max.	1 max.	1 max.	0.8 max.
DO-41 (Plastic)	256	75	140	5 Kpcs / Box	52.4 ± 1.5	6.0 ± 0.4	5.0 ± 0.5	1.2 max.	$90^\circ \pm 5^\circ$	1 max.	0.8 max.
DO-15				2 Kpcs / Box							
DO-201AD / DO-27				3 Kpcs / Box							
R-6				250 pcs / Box							

3. Carton Dimension



Product outline	DO-7	DO-41 (Plastic)	DO-15	DO-201AD / DO-27	R-6	
Dimension	A (mm)	404	420	435	420	435
	B (mm)	273	270	270	270	270
	C (mm)	165	300	180	300	180

4. Quantity of Carton Pack.

Product outline	DO-7	DO-41 (Plastic)	DO-15	DO-201AD / DO-27	R-6
Quantity	25 Kpcs	50 Kpcs	20 Kpcs	12.5 Kpcs	2.5 Kpcs

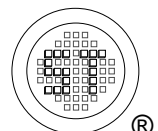
5. Label

5.1 The information of inner box label must be listed:

- 5.1.1 TYPE
- 5.1.2 QTY
- 5.1.3 CODE
- 5.1.4 RMK

5.2 The information of carton label must be listed:

- 5.2.1 TYPE
- 5.2.2 QTY



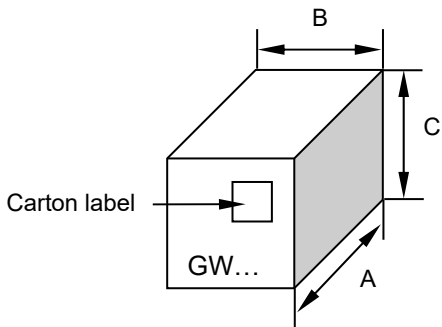
Packaging Specifications of 52 mm Ammo Pack for R-1

1. The method of inner box packaging is shown in figure 1.
2. Dimension and quantity of inner box and taping.

Units in mm

Product outline	A	B	C	Quantity	b	c	f	g	h	$ l_1-l_2 $	m
R-1	256	80	140	5 Kpcs / box	52.25 ± 0.25	6.25 ± 0.25	5.00 ± 0.30	1.0 max.	1.0 max.	1.0 max.	0.8 max.

3. Carton Dimension



Product outline		R-1
Dimension	A (mm)	430
	B (mm)	309
	C (mm)	325

- 3.1 10 box / carton
- 5 box / layer
- 2 layer / carton

4. Quantity of Carton Pack.

Product outline	R-1
Quantity	50 Kpcs

5. Label

5.1 The information of inner box label must be listed:

- 5.1.1 TYPE
- 5.1.2 QTY
- 5.1.3 CODE
- 5.1.4 RMK

5.2 The information of carton label must be listed:

- 5.2.1 TYPE
- 5.2.2 QTY

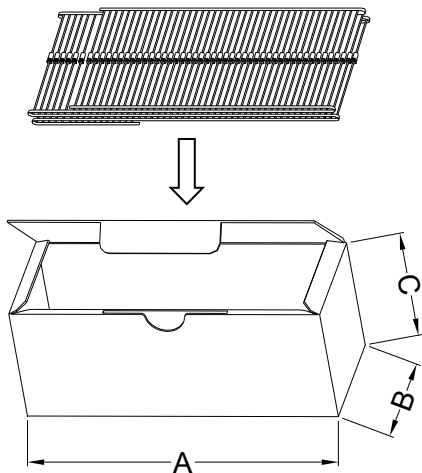
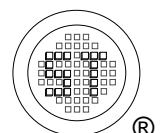
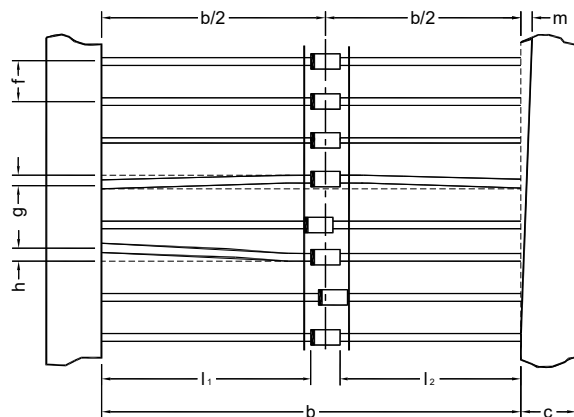
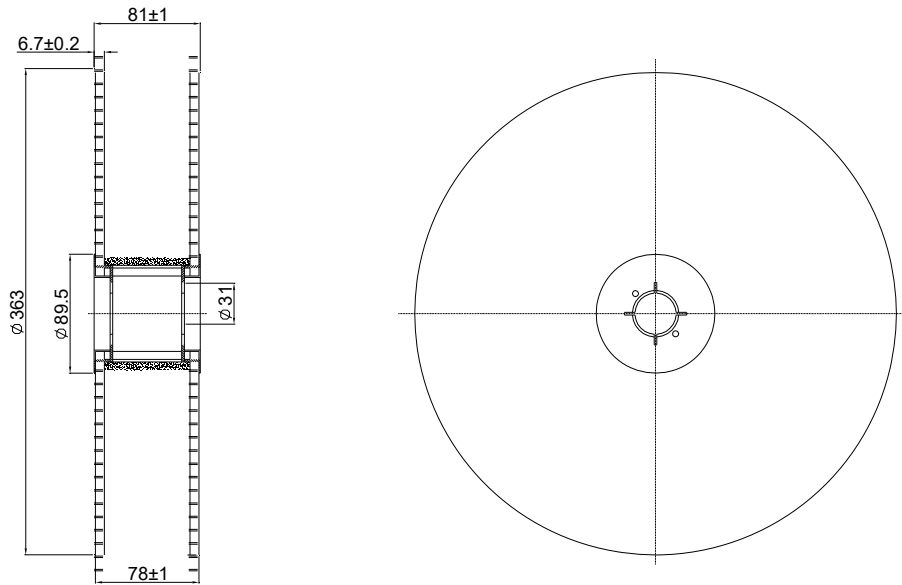


figure 1.



Reel Packaging Specifications for Ledged Type Diodes



Dimensions in mm

Standard Packaging					
Item	Qty / Kpcs		Carton Measurement		
	Reel	Carton	G.W. / Kg	N.W. / Kg	Size / cm
DO-41 Rect. Diode 1A (52 mm)	5	25	13.2	8.5	37.5 X 37.5 X 42.5

